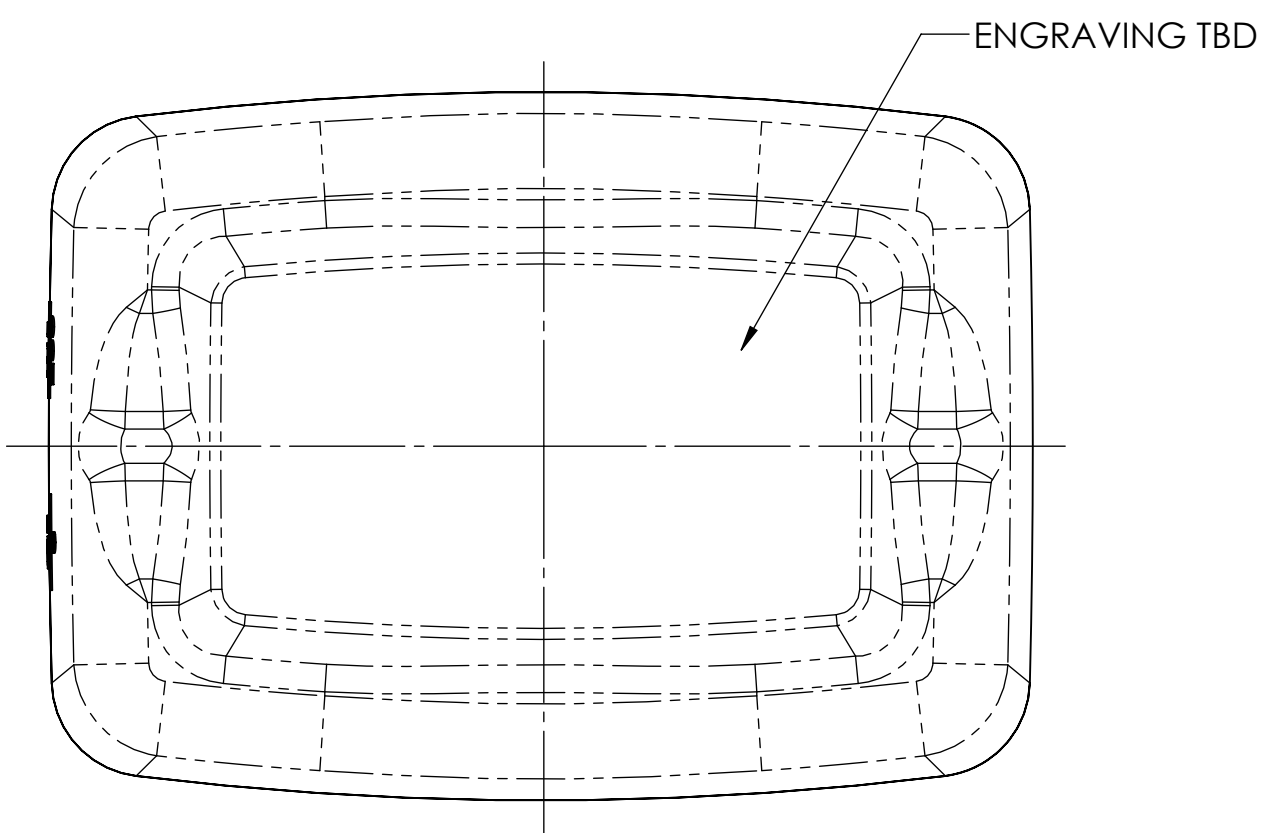
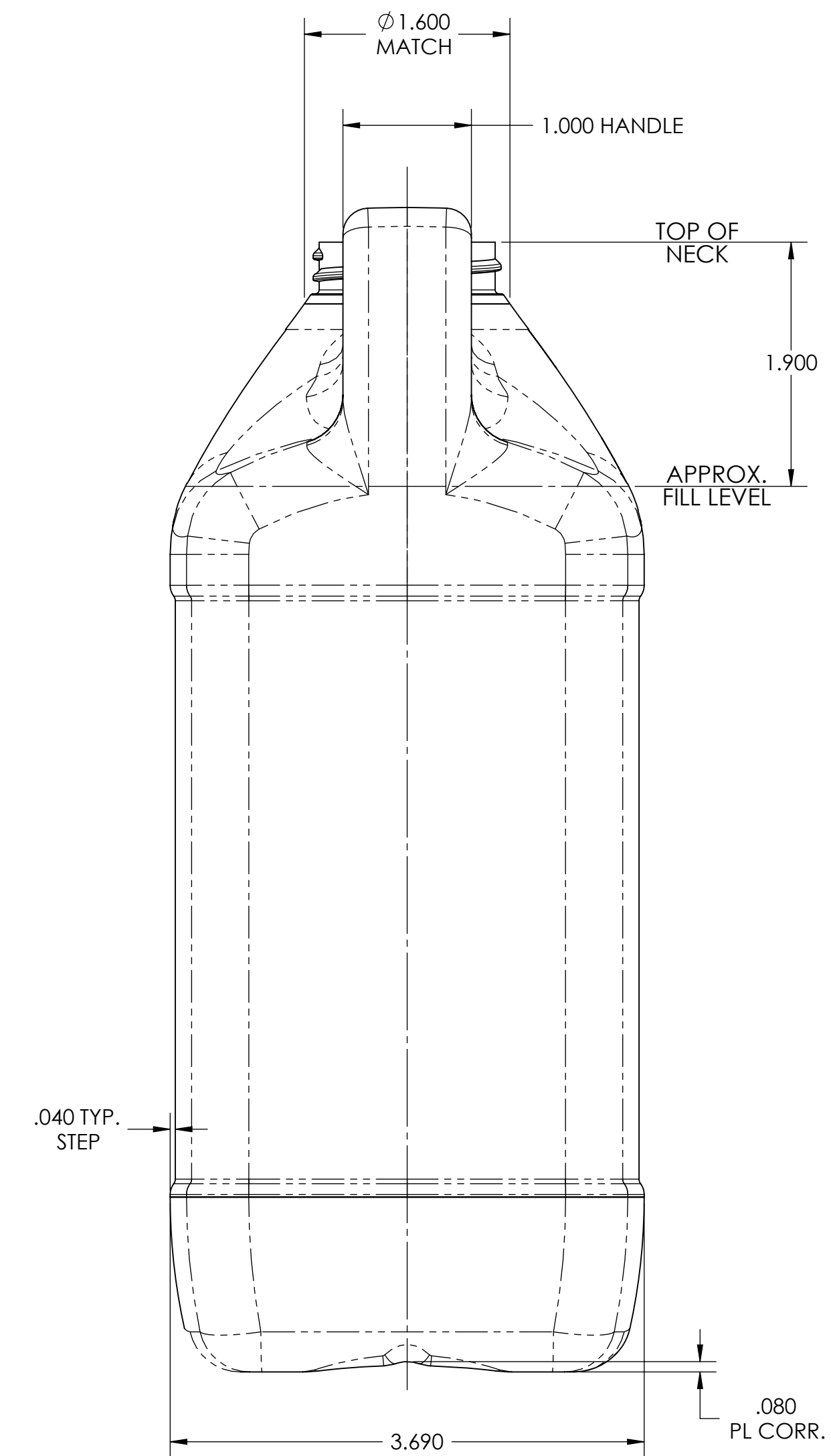
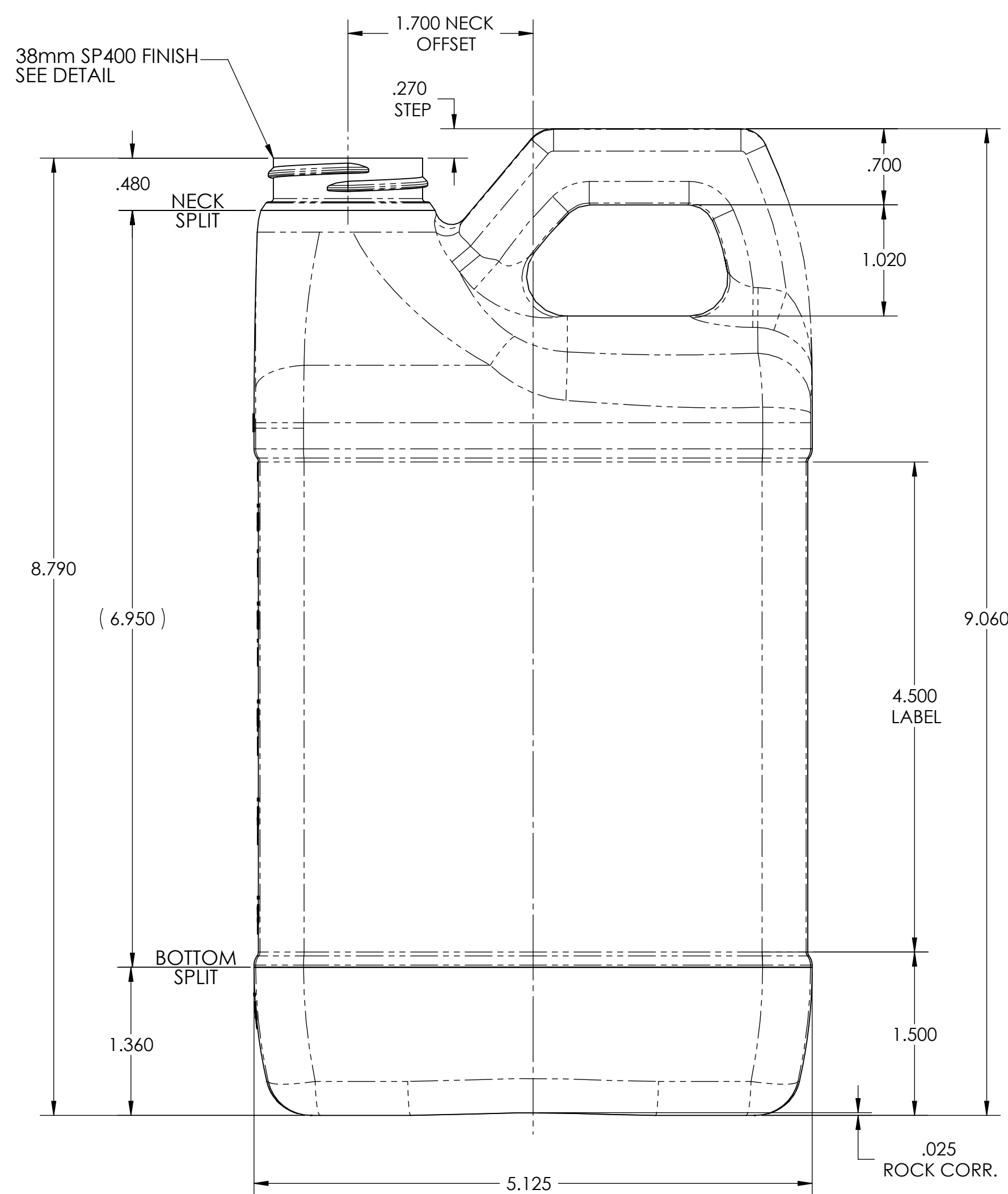
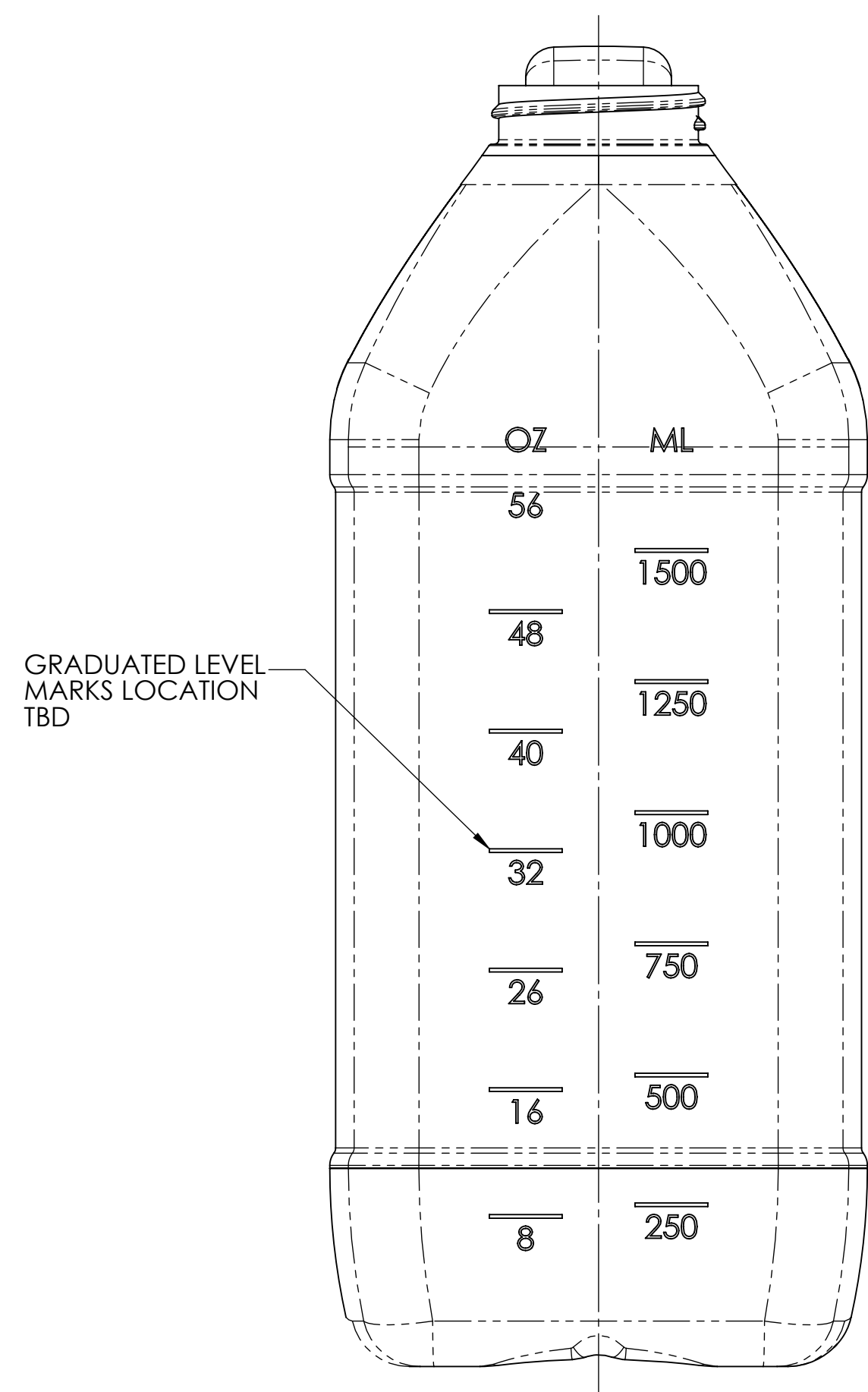
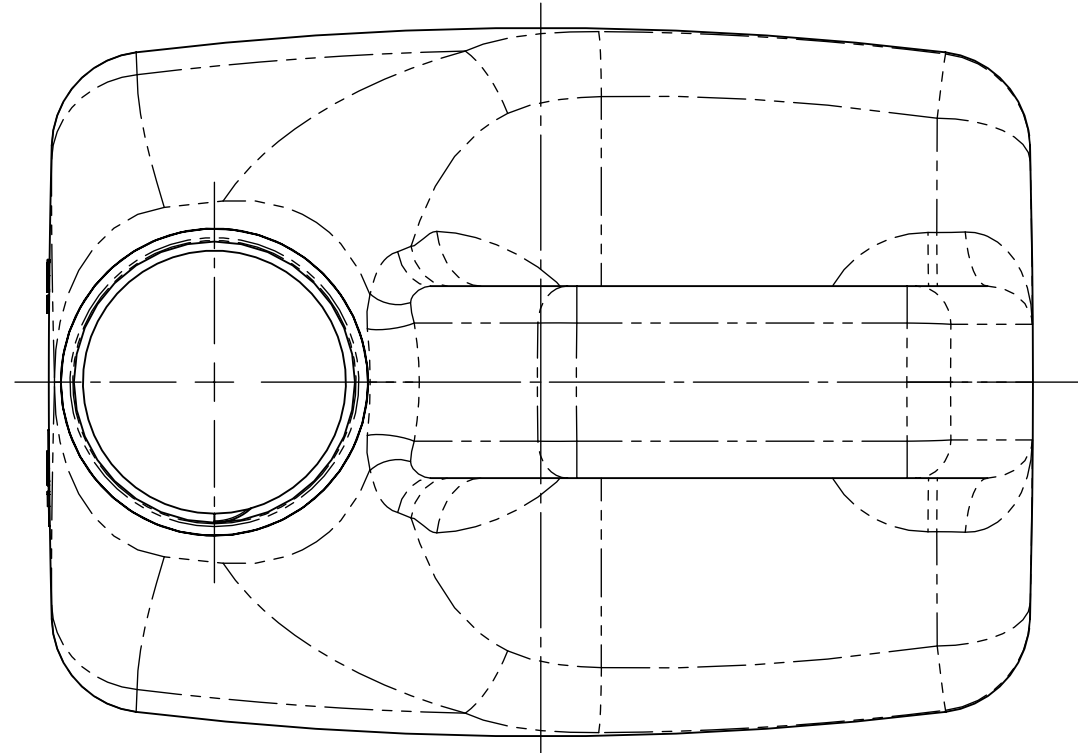


38mm SP400 FINISH
DETAIL 2X SCALE

- NOTES:
 1) "M" STYLE THREADS
 2) 6 THREADS PER INCH
 3) ONE TURN THREAD AT FULL DEPTH
 4) THREAD START AT CL IN PIN HALF



- Notes:
 1) Tolerances Unless Specified:
 Vertical -- $\pm .060''$
 Horizontal -- $\pm .080''$
 Volumetric -- $\pm .81$ oz.
 2) Bottles to be Checked Aged with 20 °C water
 3) Estimated Bulge -- 1.2 oz.

PROPRIETARY AND CONFIDENTIAL <small>THE INFORMATION CONTAINED IN THIS DRAWING IS THE SOLE PROPERTY OF MID-AMERICA MACHINING, INC. ANY REPRODUCTION IN PART OR AS A WHOLE WITHOUT THE WRITTEN PERMISSION OF MID-AMERICA MACHINING, INC. IS PROHIBITED.</small>	Drawn By: MJS	Date: 3/24/2011	Container Data:	MA MID-AMERICA Brooklyn, MI <i>Machining, Inc.</i>
	Checked: KDG	Date: 3/24/2011	Weight: 90 grams	
	Customer: Multi Cont.	Job#: ~	Fill Level Capacity: 64.0 oz.	
	Reference Materials:		Overflow Capacity: 70.0 oz.	
	Customer Sample		Material: HDPE	Description: Proposal Drawing 64 oz. "F" Style Size: D Scale: 1:1
			Avg. Wall Thickness	Drawing Number: MA-P-1520 REV: ~ SHEET 1 OF 1